

# How to Simplify SAP with GuiXT Push Buttons

## Host Speakers:

Dan Nunes, Synactive

Aparna Desai, Synactive

## Customer Speaker:

Steve Hofford, SAP Applications Developer, Altair  
Advanced Industries

# Agenda

- GuiXT Technology
- Customer Introduction
  - Steve Hofford, SAP Applications Developer
- Customer Presentations
  - Company Overview
  - Using GuiXT
  - Design Goals
  - Solution Demonstration
  - Issues Encountered
  - Benefits / Results
- Questions & Answers

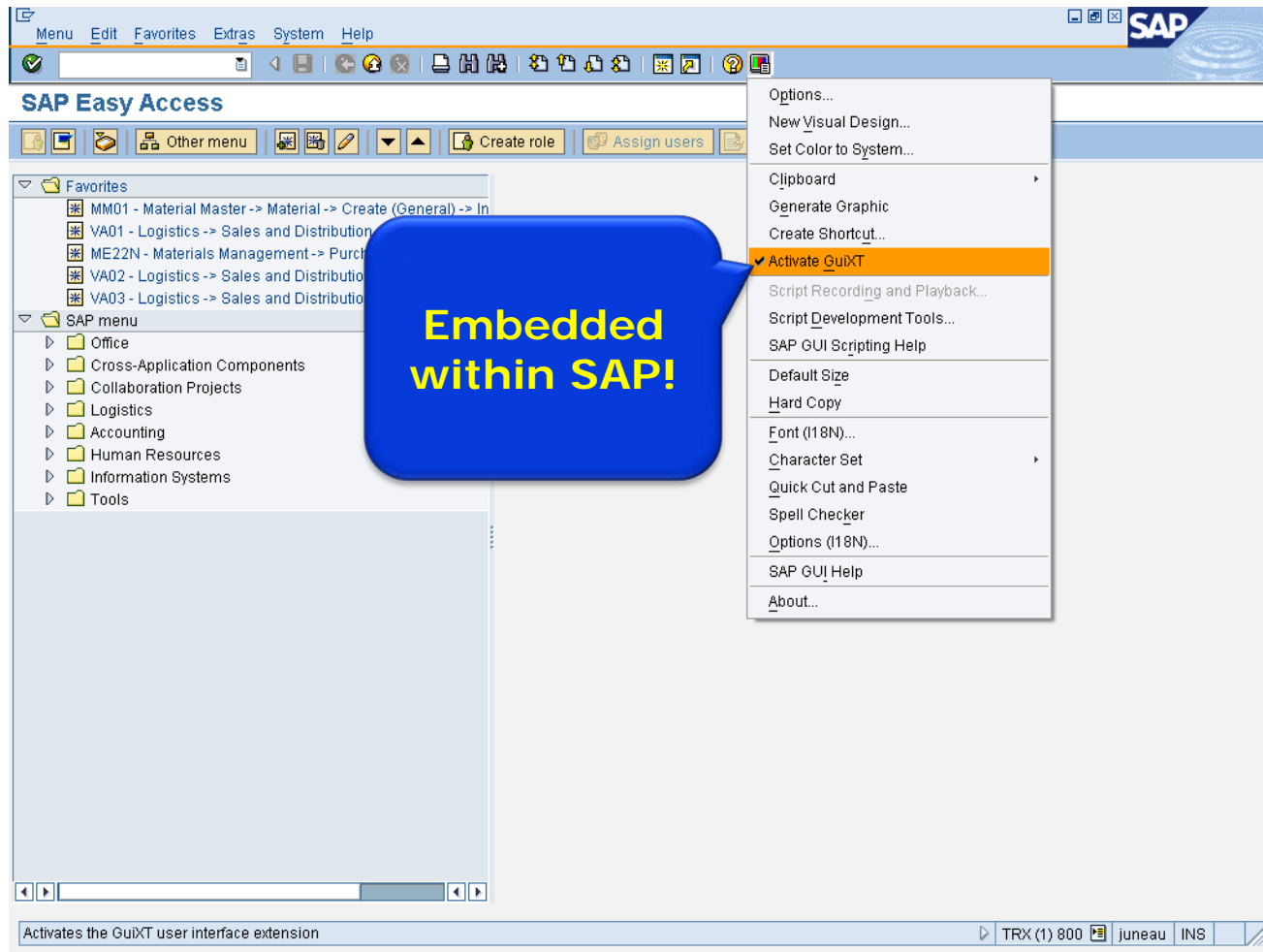
# Synactive: GuiXT Technology

## Simplify, Clarify, and Optimize SAP

- GuiXT Technology
  - Embedded in SAP
  - Certified by SAP for NetWeaver Portals
  - No backend code changes
- Benefits
  - Faster SAP Data Entry
    - Input sets automatically fill in common information in SAP fields
    - Set default values
    - Less manual entry for users means fewer mistakes
    - Streamline business processes, remove unwanted fields, and consolidate screen tabs



# Synactive: GuiXT Activation



# Synactive: GuiXT Solutions

- GuiXT Technology is a *mature, risk free* enhancement which has been bundled with SAP for the last 10 years.
- Deployed to hundreds of thousands of users worldwide, GuiXT is fast to develop and easy to customize.



# Quick Transactions with GuiXT

Steve Hofford

Altair Advanced Industries, Inc.

# Who are we?

- Implemented SAP in 1999
- Currently ECC 6.0 and Netweaver 7.0
- Approximately 400 users
- Manufacturing company
  - FI, CO, MM, PP, SD, LE, CS, QM



*Powering the World's Largest Communications Networks*



The Alpha Group is an alliance of Independent Companies sharing a common philosophy - *to create World-Class Powering Solutions*

- Over three (3) million powering solutions in operation globally
  - Over 30 years of powering solutions expertise
    - Over \$400 million in annual sales
      - Over 1,000 employees



## The Alpha Group - *Total Power Solutions*<sup>™</sup>

- Broadband Power



- FTTx



- Industrial



- Renewable Energy



- Security



- Telecom



- Traffic Control



- Wireless



- ATS



# How do we use GuiXT?

- GuiXT for SAP GUI
- InputAssistant
- Service processing
- Sales order processing
- Shipping – handling units

# Design Goals

- “KISS” – keep it simple and straightforward
  - Only remove what has to be removed
  - Only add what has to be added
- Hub and spoke architecture
- Progress indicators
- Use existing screen controls

# Existing Screen

Sales document Edit Goto Extras Environment System Help

Change Standard Alpha Order 125504: Overview

Orders Hide Header Status Contacts More Header Info

Order Number 125504 Org/Dist Chnl/Div/Office/Group 0010 10 10 9999 Net value 660.00 USD

Sold-to party 100695

Ship-to party 600000

Carrier 500545

Bill-to Party 100695

Req. Ship Date 03/25/2011

PO Receipt Date

PO Number fedex po test 03/25/11

Status Management

☐ CS MGR Appr. ☒ ORC STEVENH Assigned to:

☐ TS Rep Appr. Order Reason

☐ Inside Sales

Credit Status Approved Created By STEVENH

Item overview

Sales Note Shipping Instr. Customer Note Accounting Note

Credit Card

Name  ☐ MC

CC #  ☐ VISA

EXP Date  /  ☒ none

Shipping Blocks

☐ 01 - Credit Block

☐ 05 - Blanket Order Block

☐ 10 - TBD Block

☐ 99 - Prepay Block

☒ none

Other Ship Block

SpecProcd

Shipping Terms

☐ Collect ☒ Prepay/Charge

☐ Prepay/Allow ☐ Third Party Z1

☐ Complete Deliv.

Billing Blocks

☐ 10 - Confirm PO Qty

☐ 40 - Delivery Issues

☐ 50 - Promo Bill. Hold

☐ none

Other Bill. Block 99

Billing Terms

Incoterms EXW ORIGIN

Payment Terms Z001

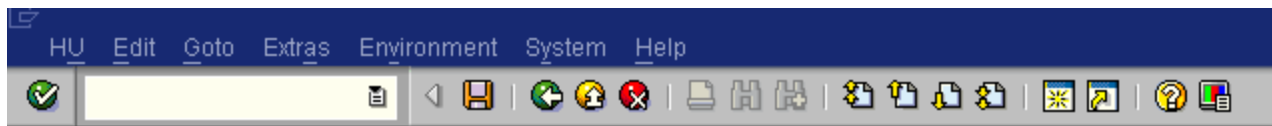
NET 30

Customer Group 10

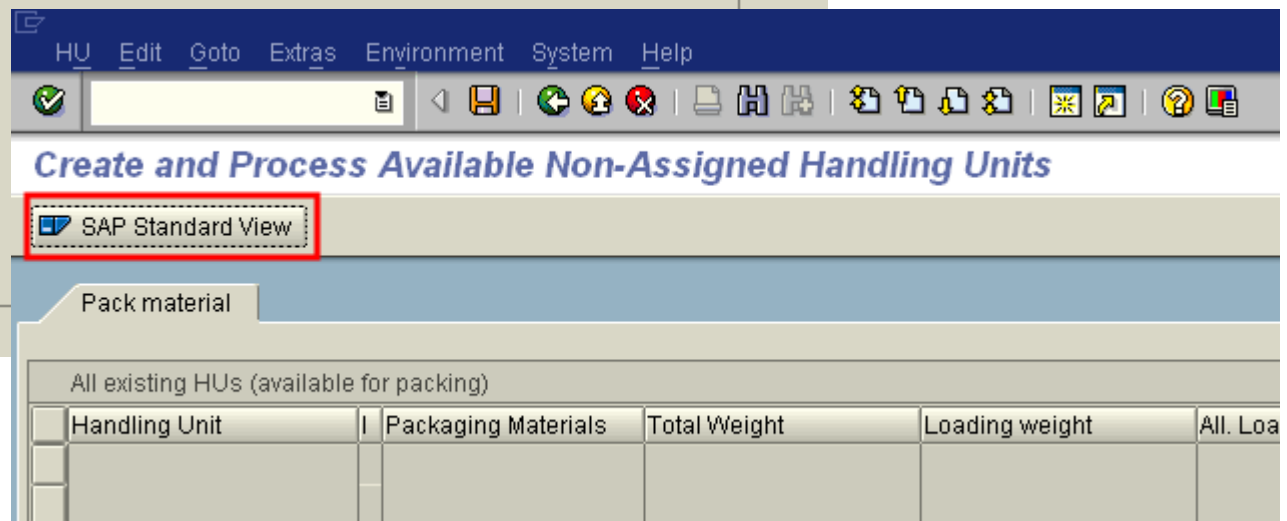
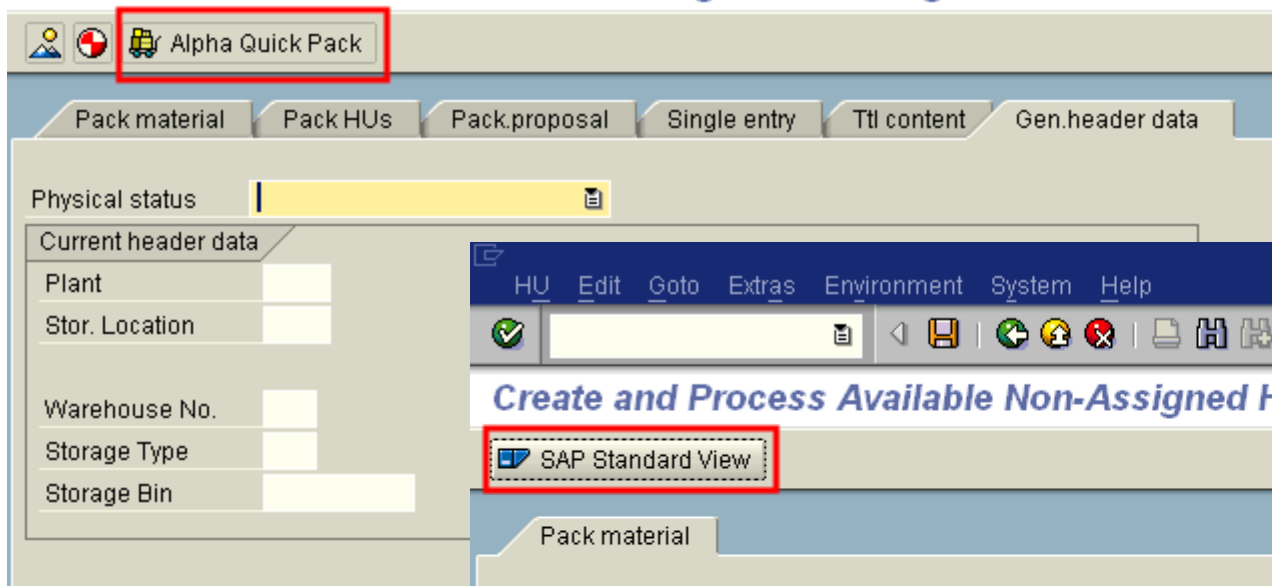
All items

Item	HLI	Material	Orde	Un	S	Description	Plnt	ItCa	First Date	Amount	Net value	Customer	Reason for rej	Billing	Gross	Delivery bloc
------	-----	----------	------	----	---	-------------	------	------	------------	--------	-----------	----------	----------------	---------	-------	---------------

# Transaction HU02



*Create and Process Available Non-Assigned Handling Units*



# Hub & Spokes

[illegible]

# Progress Indicators

**Pack material**

All existing HUs (available for packing)

Handling Unit	I	Packaging Materials	Total Weight	Loading weight	All. Loading Wt	Tare w
1000553	E	CARTON				

(2) Create HU    (3a) Pack All    (3b) Pack Selected    (4) HU Details    (5) Print & Save

Material to Be Packed

Material	Partial qty	Total quantity	U...	Plant	Batch	Stor...	W...	S	De...	Document ...	Item
210-015-11	5	5	EA	1002							1

# Hub -> Spoke -> Hub

The screenshot illustrates the 'Hub -> Spoke -> Hub' workflow in the GuiXT interface. The top window shows the 'Material to Be Packed' table with material '210-015-11' and a quantity of 5. The 'HU Details' button is circled in red. A large blue arrow points from this button to the bottom window. The bottom window shows the 'Detailed Data for Handling Unit 1000554' with a table of handling units and their quantities.

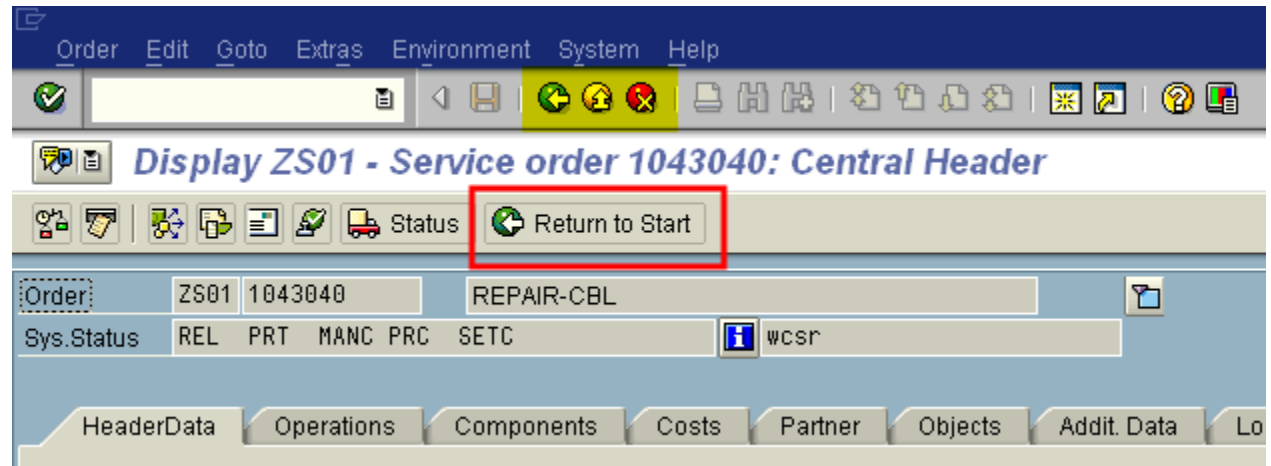
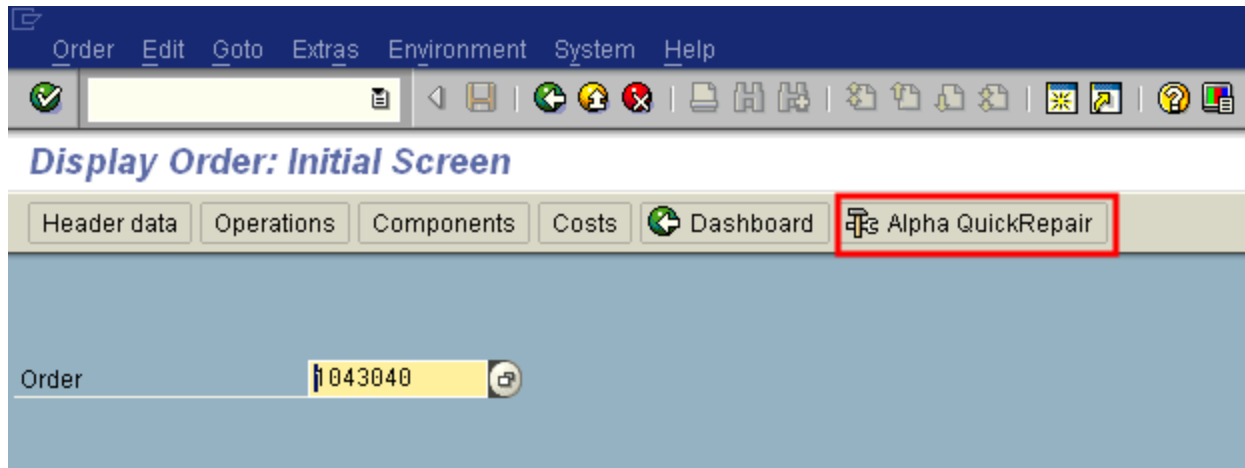
Material	Partial qty	Total quantity	U...	Plant	Batch	Stor...	W...	S De...	Document...	Item
210-015-11		5	EA	1002						1
				1002						0
				1002						0

**Detailed Data for Handling Unit 1000554**

Identification	Material	Quantity	HU Identification	1000554	Identification 7
Handling units			Packaging Materials	CARTON	Carton
1000554	CARTON		Sales Order		



# Transaction IW33



# Hub & Spokes

HeaderDataOperationsComponentsCostsPartnerObjectsAddit. DataLocationPlanningControl

Cust. addressOrder addressObj. address

Sold-to party

Street/Hse No.

Location

Telephone

RMA

Material Number010-021-20TDMC-90

No. devices1EASerial number100151035

TechnicalID

ServProd.REPAIR-CBLREPAIR-CBL

Sales Document50015228 / 100

Pur. order77626212/18/2007

AcctIndicNWBilling form02

Person responsible

PlannerGrp001 / 1008Depot Planner 1

Mn.wk.ctrDEPOTBLI / 1008DepotBLI

Costs0.00USD

PMActType

Dates

Bsc start01/10/2008Priority3 Medium

Basic fin.01/10/2008Revision

First operation

OperationUNIT HAS 2 BLOWN CURRENT SENSE RESISTORCcKey

WkCtr/PIntDEPOTBLI / 1008Ctrl keyZP04Actv TyneDEPOT

Alpha QuickRepair

(1) Enter Labor Activities

(2) Enter Matls & Causes

(3) Enter Measurements

Texts

Create or Update Text

SWO Technician

SWO Header

SWO Repair

RMA SWO Notes

Utilities

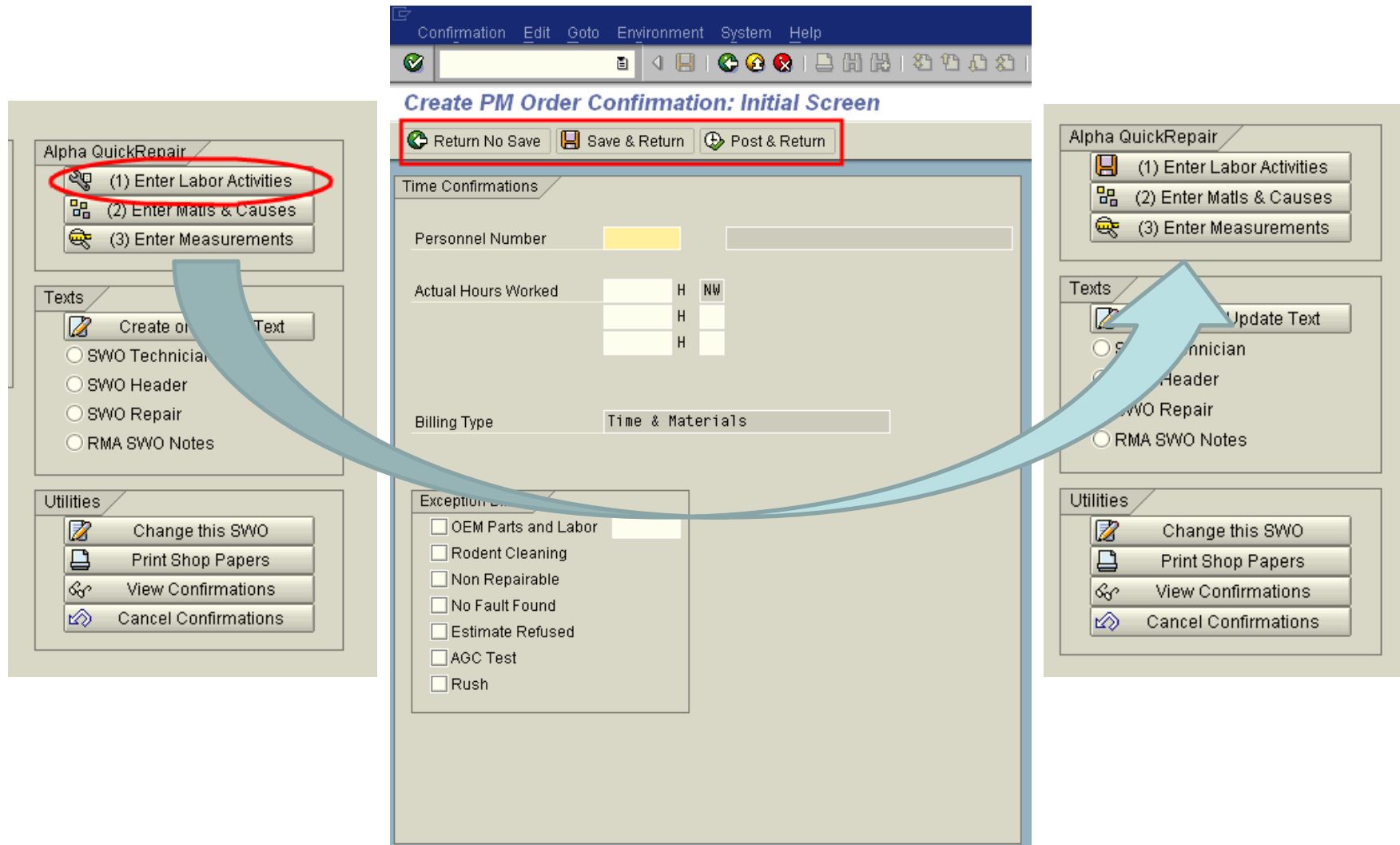
Change this SWO

Print Shop Papers

View Confirmations

Cancel Confirmations

## Hub -> Spoke -> Hub



# SAP Table Control

Service notification Edit Goto Extras Environment System Help

**Change Service Notification: Activity Report**

Partner Organization... Contract selection Return No Save Save & Return Post & Return

Notification: 360028707 Z2 Activity Report Service Order: 1043040  
 Status: NOPR ORAS Serviceable Matl: 010-021-20  
 Description: REPAIR-CBL Serial Number: 100151035

Notification Malfunction, breakdown Location data Items Measurements

Items Causes Activities

No.	Material	Description	Total Qty	Text	Code	ValType	AcIn	Status	Plant	Sloc	CCodeGrp	Obj...
1	010-021-20	TDMC-90	1	Main item								

# Local Files

- OpenFile, AppendFile, CloseFile
- Use to process table controls, with custom columns
- Use SAP long text Upload and Download to save and retrieve the local text files with table data

# Issues Encountered

- Maintaining the hub & spoke architecture consistently
- Smaller scripts but more of them
- Speed, especially table control processing

# Benefits

- Intuitive user interface alleviates end-user training burden
- High level of acceptance by the business when complex processes are streamlined
- Consistency of transactional data across business units and product lines

# Results

- Alpha QuickPack in HU02
  - Saves ~10 hours per month over hand writing packaging information
  - Data entered via QuickPack prevents costly shipping mistakes
- Alpha QuickRepair in IW33
  - Saves ~270 hours per month company-wide over standard SAP screens
  - Data entered via QuickRepair provides consistent and timely repair information to our customers



# Upcoming Events: GuiXT Exhibiting

## SAPPHIRE NOW and the ASUG Annual Conference

- **When:** May 15 – 18
- **Where:** Orange County Convention Center, Orlando, Florida
- **Booth#:** 2419

Registration and details at: [www.sapphirenow.com](http://www.sapphirenow.com)

### Sessions Highlights

**How To Transfer Data From Excel and PDF to SAP with GuiXT (3402)**

**Presenter:** Thomas Ewe, Synactive Inc.

**Date/Time:** May 16, 2011, 12:30PM – 1:30PM

**Butler Supply Inc.: Integrated Point of Sale (POS) for Small and Mid Sized Companies (3411)**

**Presenters:** William Immer, Butler Supply Inc.

**Date/Time:** May 18, 2011, 11:15AM - 12:15PM

# Questions & Answers

# Thank You Very Much!

## For more information contact us at:

**Synactive, Inc.**

**[www.GuiXT.com](http://www.GuiXT.com)**

**650-341-3310**

**[rfi@guixt.com](mailto:rfi@guixt.com)**